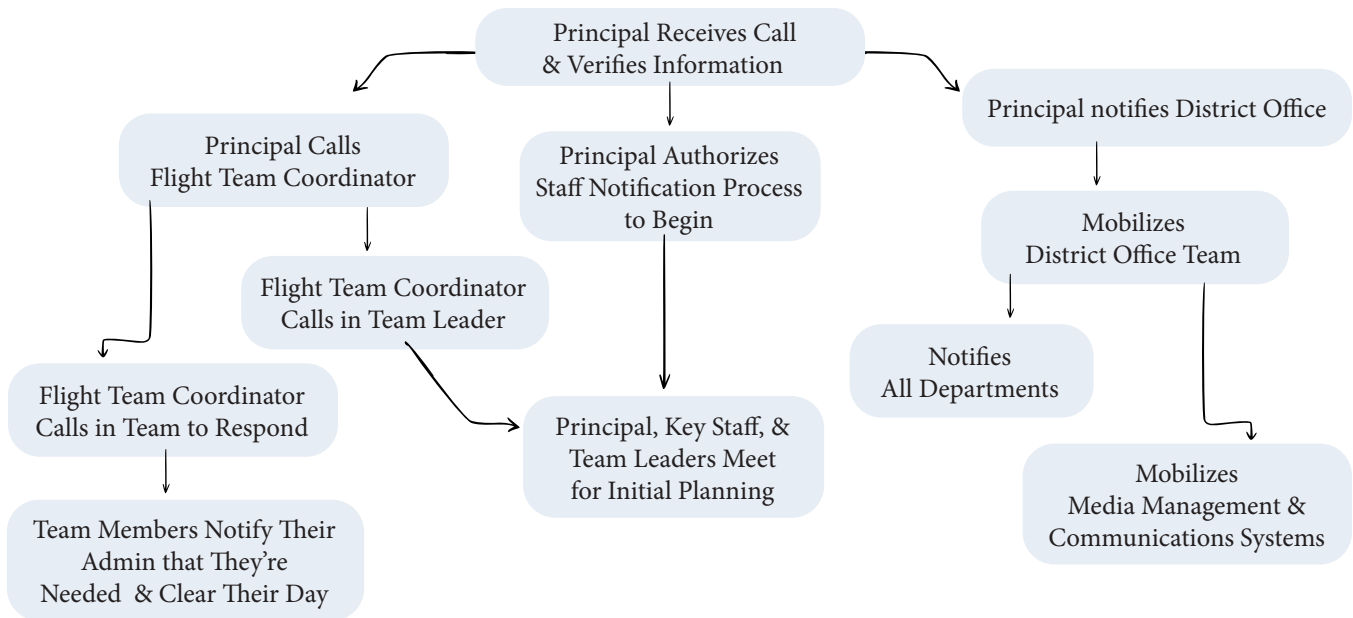


Crisis Response with Ample Timeline

EVENING OR WEEKEND BEFORE



FIRST RESPONSE DAY SCHEDULE

6:00 am	Team Leader & Principal meet at school
6:30 am	Above are joined by Team & “In house” key staff
7:00 am	Above join Staff for before-school meeting
7:45 am	Staff flood the hallways to welcome kids to school
8:00 am	Classes begin: Teachers read announcements to students, team members assist as requested
	Safe Room Coordinator sets up Safe Room
8:20 am	Team Members head to Safe Room as soon they’re able to leave classrooms
	Safe Room remains open, students come & go
	Two Team Members check on teachers, offer breaks
LUNCH TIME	Team Members provide support in staff lounge
	Safe Room continues remainder of afternoon
3:00 pm	Staff meeting with Team led by Principal
4:00 pm	Team Debriefing
5:00 pm	Team Leader & Principal debrief
6:00 pm	Team Leader reminds self of importance of self-care